



GALAPAGOS SHORE EXCURSIONS

All shore excursions in your Galapagos vacation are included and everything is provided for you, from snorkel gear and wetsuits to walking sticks. All are led by Galapagos National Park naturalists who are highly qualified in their fields.

They're able to point out diverse wildlife, from the tiny finches that led Charles Darwin to formulate his famous theory of evolution to dinosaur-like marine iguanas, spotted eagle rays, and Galapagos sea lions.

Each evening, our Expedition Director will give a briefing about the next day's visit sites and excursion options and activities.

- Important information on each activity and what to expect
- You'll sign up for your desired activity after the briefing
- What to bring and what to wear, including footwear, clothing, landings, terrain
- All activities are included, there is nothing to pre-book before the sailing

DEFINING LANDINGS

Wet: Arrive directly on the shore, stepping into the water or surf on the beach. Your feet will get wet.

Dry: Tender drops you onshore on rocks or a pier without any major splashing. Chances of getting wet are low.

None: Activity does not require landing ashore.

ACTIVITY LEVELS

Low: May require leisurely walking, or sitting on a tender for an extended period of time.

Mild: Requires extended periods of walking over even and uneven surfaces and/or extended periods of standing.

Strenuous: High intensity activities requiring effort, including steep terrain and/or water activity in a slight to strong current. Previous experience or training is highly recommended. Participants with physical limitations should take this into account.

FLORA – INNER LOOP

DAY 1 | SUNDAY



Embarkation

BALTRA

During World War II, Baltra served as a U.S. military base protecting the Panama Canal from enemy attack. Now the cactus-strewn landscapes of Baltra are home to the region's main airport and where you will meet the ship. From the airport, it is just a short bus and tender ride to the ship.

DAY 2 | MONDAY



Morning

PUERTO EGAS, SANTIAGO

With its sandy beach and black-rock, blue-water grottos, this stop offers a taste of the Galapagos geology, some great snorkeling, and an opportunity to see shore birds, sea lions, marine iguanas, and Galapagos fur seals.

EXCURSION OPTIONS	ACTIVITY LEVEL	LANDING
Hike Take a walk along the shore to the grottos to see fur seals, option for long or short walk.	Mild	Wet
Snorkel Optional snorkeling from the beach. Sea lions, colorful tropical fish and sea turtles are often seen, conditions permitting.	Mild	Wet
Swim After your hike, you have the option to take a swim from the beach, conditions permitting.	Mild	Wet



Afternoon

RABIDA

A small island south of Santiago, Rabida is best known for its red sand and eroded volcanic landscape. A nesting colony of pelicans makes its home here, along with sea lions and some sea birds.

EXCURSION OPTIONS	ACTIVITY LEVEL	LANDING
Kayak Kayak along the coast of Rabida to see pelicans and other nesting along its crimson volcanic cliffs. Previous kayak experience recommended.	Mild	None
Hike Land directly on the beach that sits in front of a salt water lagoon, to take a long walk through its arid landscape. Option to hike before or after kayaking or swimming/snorkeling.	Mild	Wet
Tender/Coastal Exploration Take a coastal ride along the dramatic red volcanic cliffs.	Low	None
Snorkel After your hike, kayak or tender ride, you have the option to get in the water from the beach. If visibility allows, turtles, sea lions and dozens of brightly colored fish can be spotted.	Mild	Wet
Swim After your hike, kayak or tender ride, you can take a swim in the beach, conditions permitting.	Mild	Wet

FLORA – INNER LOOP

DAY 3 | TUESDAY



Elizabeth Bay

Morning

ELIZABETH BAY, ISABELA

Situated in one of the western-most points in the Galapagos, Elizabeth Bay surrounded by a lush mangrove forest and serves as a sanctuary for a lot of endemic wildlife. Explore the rocky islets just outside the bay by zodiac and get to know the wildlife within this delicate ecosystem.

EXCURSION OPTIONS	ACTIVITY LEVEL	LANDING
Tender/Coastal Exploration A scenic tender ride along this sheltered inlet offers viewing of a wide variety of wildlife and a wonderful mangrove ecosystem. There's a lot to see here, keep an eye out for spotted eagle rays, marine iguanas, blue-footed boobies, Galapagos penguins, resting turtles, sea lion pups and more.	Low	None



Tagus Cove

Afternoon

TAGUS COVE, ISABELA

Historically an anchorage for pirates and whalers, this site offers a breathtaking view of Isabela, its volcanoes, and a saltwater lagoon. Along the shore, seabirds, penguins, sea lions, sea turtles, and nesting flightless cormorants can often be found.

EXCURSION OPTIONS	ACTIVITY LEVEL	LANDING
Snorkel Advanced deep-water snorkel (experienced snorkelers only). Drop off from the tender, here you can swim with sea turtles, penguins, and sea stars, conditions permitting.	Strenuous	Wet
Kayak If you prefer to stay above the water, kayak along the rugged coast marked with pirate graffiti dating back from 1836. Previous kayak experience recommended.	Mild	None
Hike Option to take a short walk or a long, fast-paced fitness walk up the steep but short trail to the top.	Strenuous	Dry
Tender/Coastal Exploration Explore the shoreline of the northwestern coast of Isabela, spot pirate graffiti that is more than 150 years old.	Low	None

FLORA – INNER LOOP

DAY 4 | WEDNESDAY



Sullivan Bay

Morning

SULLIVAN BAY, SANTIAGO

During a volcanic eruption in the early 1900's, this area of Santiago was covered with flowing lava. Today, the hardened fields of black rock create a geologic wonderland.

EXCURSION OPTIONS	ACTIVITY LEVEL	LANDING
Hike We will take advantage of the cool early morning for a walk at this amazing site. Options include a long, fast-paced fitness walk or a short walk. Terrain here is uneven, as it covered by lava flows.	Strenuous	Dry



Bartolomé Island

Afternoon

BARTOLOMÉ ISLAND

Bartolomé Island hosts one of the region's most often photographed views, and a spectacular geologic setting. Its barren moon-like volcanic landscapes, spatter cones, and pinnacle rock make for a unique stop. It is also home to the endemic Galapagos penguin and provides an excellent opportunity for snorkeling.

EXCURSION OPTIONS	ACTIVITY LEVEL	LANDING
Snorkel Advanced deep-water snorkel (experienced snorkelers only). Drop off from the tender, here you can swim with the Galapagos penguin, conditions permitting.	Strenuous	Wet
Hike Hike up 368 stairs to the top of the volcano and witness the region's most iconic views.	Strenuous	Dry
Tender/Coastal Exploration Navigate through the rocky shoreline where colonies of penguins can be seen perched on the rocks.	Mild	None

FLORA – INNER LOOP

DAY 5 | THURSDAY



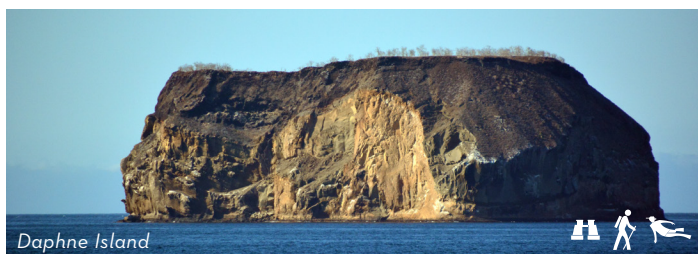
Las Bachas

Morning

LAS BACHAS BEACH, SANTA CRUZ

This is one of the most beautiful white sand beaches in all of the Galapagos, and behind it are two small ponds that often have flamingos feeding in the shallows. It is also one of the largest nesting areas for the Pacific green sea turtle.

EXCURSION OPTIONS	ACTIVITY LEVEL	LANDING
Hike Take a short beach walk to look for flamingos, followed by an optional opportunity to swim, snorkel, or just relax on the shore.	Mild	Wet
Swim Here, you can simply go to the white sand beach to relax, swim, and walk along the shore.	Low - Mild	Wet
Snorkel Experienced snorkelers will have an option to do a deep-water snorkel, dropping off from the tender.	Strenuous	Wet



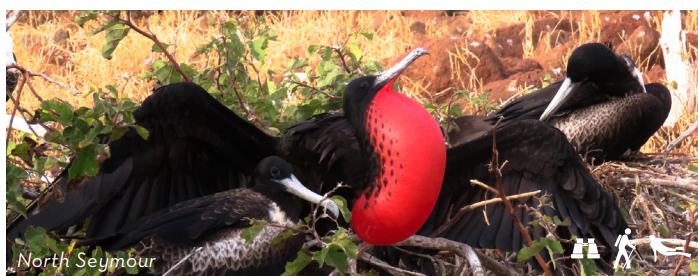
Daphne Island

Afternoon

DAPHNE MAJOR

Daphne is a satellite volcanic cone located north of Santa Cruz Island. The crater floor is an important breeding site for blue-footed boobies. The cliff shore of the island is home for sea lions, pelicans, blue-footed boobies, and tropical birds.

EXCURSION OPTIONS	ACTIVITY LEVEL	LANDING
Circumnavigation Head to Deck 7 & 8 (starboard side) with our naturalists for an insightful lecture of Daphne's biodiversity and history, including the most important and insightful scientific study into Darwin's finches. Don't forget your binoculars, as this is a great opportunity for bird watching. Many seabird species nest on the steep cone slopes, and can be seen plunge-diving for fish. For guests with balconies facing the starboard side, you are welcome to enjoy the circumnavigation from your suites.	Low	None



North Seymour

Afternoon

NORTH SEYMOUR

North Seymour is a small island just north of Baltra. It is home to the largest colony of frigate birds in the Galapagos. While keeping an eye out for male frigates trying to impress potential mates with an inflated red neck pouch, you may also see blue-footed boobies dancing in a timeless courtship ritual. Sea lions and large land iguanas also roam about this rocky terrain.

EXCURSION OPTIONS	ACTIVITY LEVEL	LANDING
Hike Take a long, or short, walk through the partially rocky trail.	Mild	Dry
Tender/Coastal Exploration A scenic tender tour along the coast to view wildlife and the geology of the area.	Low	Dry
Snorkel Experienced snorkelers will have an option to do a deep-water snorkel, dropping off directly from the tender, if conditions allow.	Strenuous	Wet

FLORA – INNER LOOP

DAY 6 | FRIDAY



Puerto Baquerizo Moreno

Morning

PUERTO BAQUERIZO MORENO, SAN CRISTOBAL

This small waterfront town is the administrative capital of the islands. The town is home to a university, post office, police station, hospital and other essential services. Sea lions can also be seen all over town, lounging on boat decks or sleeping on park benches.

EXCURSION OPTIONS	ACTIVITY LEVEL	LANDING
Tour The local interpretation provides a complete history of the Galapagos and gives visitors a comprehensive understanding of the biology, geology and human history of the islands.	Mild	Dry
Hike A trail system located by the interpretation center connects various scenic vistas. Take a fast-paced walk to the cove of Cerro Tijeretas and the Charles Darwin statue, overlooking the ocean towards Kicker Rock. This entire trail is paved or graveled and can be slippery or steep in certain areas.	Strenuous	Dry
Free time After the visit to the interpretation center and/or scenic hike, you can relax in the town like a local. Here, you'll have time in the town for shopping, sight-seeing, or visiting the local beaches.	Mild	Dry



Punta Pitt

Afternoon

PUNTA PITT, SAN CRISTOBAL

Thought by many to be the most spectacular site in San Cristobal, this visit allows us the unique opportunity to observe all three species of boobies, Blue, Red and Nazca, and two species of frigates birds nesting in the same area. In addition, there is an opportunity to explore its volcanic terrain as well as beach swimming.

EXCURSION OPTIONS	ACTIVITY LEVEL	LANDING
Hike Take a long, steep hike through a rocky terrain. After disembarking onto the small green sand beach, you'll hike up to a plateau, where the view and landscape are spectacular.	Strenuous	Wet
Tender/Coastal Exploration A scenic tender tour along the volcanic landscape.	Low	None
Swim After a tender ride and/or hike, you have the option to take a short swim from the beach.	Mild	Wet

FLORA – INNER LOOP

DAY 7 | SATURDAY



All Day

PUERTO AYORA, SANTA CRUZ ISLAND

This is the main population center of the islands, and home to the National Park Service tortoise-breeding center and the Charles Darwin Research Station. Santa Cruz is the only island where you can travel through every habitat type in the archipelago. This makes the journey into the highlands a fantastic opportunity to experience the breadth of life that exists on these islands.



EXCURSION OPTIONS	ACTIVITY LEVEL	LANDING
<p>Tour Take a short bus ride from the port to visit the Charles Darwin Station and giant tortoise breeding center to witness conservation in action. You'll learn about the extensive efforts that help protect and restore the flora, fauna and habitats of the Galapagos and see various species of giant tortoises reared in captivity before being introduced into the wild. Thousands of wild Galapagos tortoises exist today thanks to the efforts that take place here.</p>	Mild	Dry
<p>Free time Afterward, you will have time in the town to walk through the main street of Avenida Charles Darwin which connects the research station to the main dock.</p>	Mild	Dry
<p>Tour A bus ride will then take you to the highlands of Santa Cruz, where you will have an exclusive opportunity to participate in our Scalesia reforestation project. You will plant endemic tree seedlings in the effort to reverse the damage caused by invasive species in Los Gemelos forest. With your help, we have planted almost 100,000 seedlings and restored over 56 acres!</p>	Mild	Dry**
<p>Manzanillo Ranch In the Manzanillo ranch, you will enjoy lunch and a cheerful performance by local folk dancers. You can then take a short walk through the lush, green, mist-covered terrain where you can observe giant tortoises living in the wild.</p>	Mild	Dry**
<p>Free time As Puerto Ayora has the best developed infrastructure in the Galapagos, you will have time to enjoy local restaurants, shopping, and sight-seeing.</p>	Mild	Dry

**Rain boots provided for you

FLORA – OUTER LOOP

DAY 1 | SUNDAY



Embarkation

BALTRA

During World War II, Baltra served as a U.S. military base protecting the Panama Canal from enemy attack. Now the cactus-strewn landscapes of Baltra are home to the region's main airport and where you will meet the ship. From the airport, it is just a short bus and tender ride to the ship.

DAY 2 | MONDAY



Morning

GARDNER BAY, ESPAÑOLA

A long white sand beach and clear blue waters make this an ideal spot for swimming, snorkeling, or just relaxing on the beach. In the water, sea turtles, rays, colorful tropical fish, and maybe even a white-tip reef shark may be seen. It is also home to a colony of sea lions.

EXCURSION OPTIONS	ACTIVITY LEVEL	LANDING
Hike A relaxing beach walk through the extensive white sand beach and its clear blue waters.	Mild	Wet
Swim Here, you can simply go to the white sand beach to relax, swim, and walk along the shore.	Mild	Wet
Snorkel Bring your snorkeling gear and swim into a small semi-submerged cone located in front of the beach where white-tipped sharks, rays, sea lions, and a variety of colorful reef fish can be seen.	Mild - Strenuous	Wet
Kayak Before, or after, going to the beach, you have the option to take a kayak through the clear blue waters of Española. Previous kayak experience recommended.	Mild	None



Afternoon

SUAREZ POINT, ESPAÑOLA

Española is the oldest island in the Galapagos and home to an abundance of wildlife. At this site, you can expect to see sea lions, Galapagos Hawks, marine iguanas, and both blue-footed and Nazca boobies. Between late March and the following January, the Waved Albatrosses come here to mate and raise their young.

EXCURSION OPTIONS	ACTIVITY LEVEL	LANDING
Hike A rocky walk to look for Waved Albatrosses and observe an impressive blowhole that spews water like a towering geyser.	Strenuous	Dry

FLORA – OUTER LOOP

DAY 3 | TUESDAY



Cormorant Point

Morning

CORMORANT POINT, FLOREANA

Floreana was the first capital of the Galapagos, and where Charles Darwin met the islands' Governor. Its small brackish lagoon is often home to flamingos, stilts, and white-cheeked pintail ducks, and one of its beaches is a highly used nesting site for sea turtles. Check out the green-hued sand where you land.

EXCURSION OPTIONS	ACTIVITY LEVEL	LANDING
Hike A relatively short walk to the lagoon and sea turtle nesting beach.	Mild	Dry
Snorkel Nearby Champion Island lies east of Floreana and provides a wonderful opportunity for advanced snorkeling. When snorkeling, tropical fish abound with frequent sightings of sea turtles, rays, sharks, sea stars, and more. If we're lucky, the sea lions will be in a playful mood.	Strenuous	Wet
Tender/Coastal Exploration During a tender ride along the rocky shoreline, keep an eye out for seabirds such as boobies, pelicans, and frigate birds. Red-billed Tropicbirds nest in the crevices below the large prickly pear cacti, and you may spy the very rare Charles Mockingbird.	Low	None



Post Office Bay

Afternoon

POST OFFICE BAY, FLOREANA

Rich in history, this site is home to the post office barrel established in about 1793, where pirates, buccaneers, whalers and others could leave their mail to be picked up by outbound ships. The tradition continues today, as visitors leave addressed postcards in the barrel and sort through left mail to deliver at home.

EXCURSION OPTIONS	ACTIVITY LEVEL	LANDING
Kayak Glide through the calm waters of Floreana to spot turtles and sea lion pups. Previous Kayak experience recommended.	Mild	None
Hike Beach walk to visit the world's most unusual post office.	Mild	Wet
Tender/Coastal Exploration Take a scenic tender ride, enjoy the view of Floreana topography, its endemic fauna, and the bay itself.	Mild	None

FLORA – OUTER LOOP

DAY 4 | WEDNESDAY



Moreno Point

Morning

MORENO POINT, ISABELA

Along this beautiful rocky shore, a field of hardened black lava flows is pockmarked by shallow pools, which are home to shorebirds and flamingos. The mangrove-lined shore also provides a chance to see marine iguanas, sea turtles, stingrays, sharks, penguins, and the flightless cormorant.

EXCURSION OPTIONS	ACTIVITY LEVEL	LANDING
Hike A rocky trail through several lava fields, tidal lagoons, pools and mangroves, all of which provide an oasis for wildlife, particularly bird species.	Strenuous	Dry
Tender/Coastal Exploration Great views of the striking rocky shoreline and Galapagos Penguins perched on the rocky shores.	Low	None



Urbina Bay

Afternoon

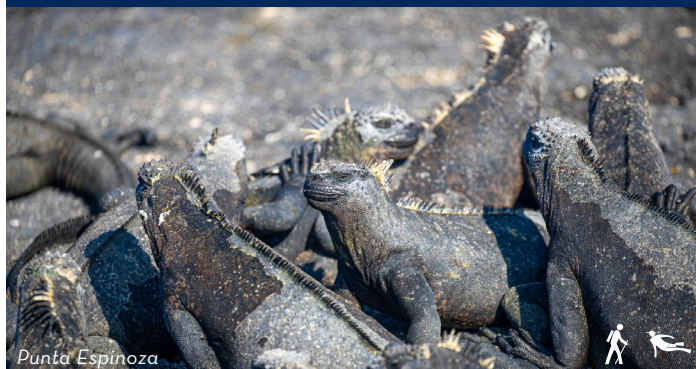
URBINA BAY, ISABELA

Composed of five coalesced volcanoes, this is the largest island in the Galapagos and the most recently active, the latest eruption having occurred in 2009. Here we will see large land iguanas, finches, and if lucky, a giant tortoise or two. In 1954, the intrusion of magma below one of the islands volcanoes caused part of the bay to be uplifted some 6 meters, and today we can walk through the remains of what was once a thriving underwater reef.

EXCURSION OPTIONS	ACTIVITY LEVEL	LANDING
Hike A short walk on in the middle of a bed of coral located on the base of the Alcedo volcano.	Mild	Wet
Swim If conditions allow, a swim in the waters of Urbina Bay is a good opportunity to see turtles and rays.	Strenuous	Wet

FLORA – OUTER LOOP

DAY 5 | THURSDAY



Punta Espinoza

Morning

PUNTA ESPINOZA, FERNANDINA

Fernandina is the youngest island in the Galapagos and, as Darwin wrote, it is “covered with immense deluges of black naked lava.” Along with its extraordinary black lava rocks, this point of land hosts the largest colony of marine iguanas in the Archipelago, along with sea lions and a nesting site for flightless cormorants.

EXCURSION OPTIONS	ACTIVITY LEVEL	LANDING
Hike Long and short options available through the unique terrain of Fernandina.	Mild - Strenuous	Dry
Snorkel Punta Espinoza makes for one of the best places snorkeling sites on the islands, weather permitting. There are great chances to see penguins, sea turtles, flightless cormorants and marine iguanas feeding underwater.	Mild - Strenuous	Wet



Vicente Roca Point

Afternoon

VICENTE ROCA POINT, ISABELA

The half-collapsed remains of an ancient volcano make for a spectacular setting at this site. Awe-inspiring cliffs, blue waters, and wildlife create a tender ride to remember as we search for sea turtles, penguins, fur seals, the flightless cormorant, marine iguanas, marine mammals, and the oddly shaped form of the elusive sunfish.

EXCURSION OPTIONS	ACTIVITY LEVEL	LANDING
Tender/Coastal Exploration Ride along a striking volcano backdrop that juxtaposes vividly with the aquamarine waters.	Low	None
Snorkel Considered to be one of the best snorkeling sites in the archipelago. Swim around the remains of an ancient volcano among Galapagos fur seals and tuna. Advanced deep-water snorkel for experienced snorkelers only.	Strenuous	Wet

FLORA – OUTER LOOP

DAY 6 | FRIDAY



South Plaza Island

Morning

SOUTH PLAZA ISLAND

One of two islands off Santa Cruz, South Plaza was born of upheaval, uplifted during a geologic event. The rocky island is strewn with prickly pear cactus and home to land iguanas, marine iguanas, and a colony of sea lions.

EXCURSION OPTIONS	ACTIVITY LEVEL	LANDING
Hike Option to take a short or long hike through the rocky island.	Mild	Dry



Daphne Island

Afternoon

DAPHNE MAJOR

Daphne is a satellite volcanic cone located north of Santa Cruz Island. The crater floor is an important breeding site for blue-footed boobies. The cliff shore of the island is home for sea lions, pelicans, blue-footed boobies, and tropical birds.

EXCURSION OPTIONS	ACTIVITY LEVEL	LANDING
Circumnavigation Head to Deck 7 & 8 (starboard side) with our naturalists for an insightful lecture of Daphne's biodiversity and history, including the most important and insightful scientific study into Darwin's finches. Don't forget your binoculars, as this is a great opportunity for bird watching. Many seabird species nest on the steep cone slopes, and can be seen plunge-diving for fish. For guests with balconies facing the starboard side, you are welcome to enjoy the circumnavigation from your suites.	Low	None



Punta Pitt

Afternoon

DRAGON'S HILL, SANTA CRUZ

Dragon Hill, or "Cerro Dragon," is named after its population of land iguanas. The site offers a beautiful view of the landscape and two small brackish lagoons where flamingos and other shore birds occasionally feed. Along the trail, we'll cross a beautiful "white forest" of Palo Santo (incense) trees and Galapagos cotton plants.

EXCURSION OPTIONS	ACTIVITY LEVEL	LANDING
Hike Option to take a short or long hike through the white forest of Palo Santo trees and Galapagos cotton plants.	Mild - Strenuous	Dry

FLORA – OUTER LOOP

DAY 7 | SATURDAY



All Day

PUERTO AYORA, SANTA CRUZ ISLAND

This is the main population center of the islands, and home to the National Park Service tortoise-breeding center and the Charles Darwin Research Station. Santa Cruz is the only island where you can travel through every habitat type in the archipelago. This makes the journey into the highlands a fantastic opportunity to experience the breadth of life that exists on these islands.



EXCURSION OPTIONS	ACTIVITY LEVEL	LANDING
<p>Tour Take a short bus ride from the port to visit the Charles Darwin Station and giant tortoise breeding center to witness conservation in action. You'll learn about the extensive efforts that help protect and restore the flora, fauna and habitats of the Galapagos and see various species of giant tortoises reared in captivity before being introduced into the wild. Thousands of wild Galapagos tortoises exist today thanks to the efforts that take place here.</p>	Mild	Dry
<p>Free time Afterward, you will have time in the town to walk through the main street of Avenida Charles Darwin which connects the research station to the main dock.</p>	Mild	Dry
<p>Tour A bus ride will then take you to the highlands of Santa Cruz, where you will have an exclusive opportunity to participate in our Scalesia reforestation project. You will plant endemic tree seedlings in the effort to reverse the damage caused by invasive species in Los Gemelos forest. With your help, we have planted almost 100,000 seedlings and restored over 56 acres!</p>	Mild	Dry**
<p>Manzanillo Ranch In the Manzanillo ranch, you will enjoy lunch and a cheerful performance by local folk dancers. You can then take a short walk through the lush, green, mist-covered terrain where you can observe giant tortoises living in the wild.</p>	Mild	Dry**
<p>Free time As Puerto Ayora has the best developed infrastructure in the Galapagos, you will have time to enjoy local restaurants, shopping, and sight-seeing.</p>	Mild	Dry

**Rain boots provided for you